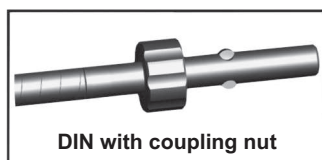


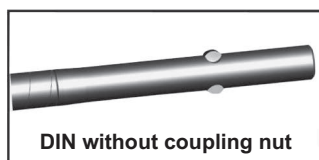
Ø [mm]	L [mm]	DIN z nakrętką with nut с гайкой	DIN bez nakrętki without nut без гайки	AO	Harris	Hudson	Stryker / Zimmer / Trinkle
		Nr katalogowy Catalogue no. № по кат.	Nr katalogowy Catalogue no. № по кат.	Nr katalogowy Catalogue no. № по кат.	Nr katalogowy Catalogue no. № по кат.	Nr katalogowy Catalogue no. № по кат.	Nr katalogowy Catalogue no. № по кат.
6,0	390	40.5103.000	40.5103.100	40.5103.200	40.5103.300	40.5103.400	40.5103.500
6,5	390	40.5104.000	40.5104.100	40.5104.200	40.5104.300	40.5104.400	40.5104.500
7,0	390	40.4541.000	40.4541.100	40.4541.200	40.4541.300	40.4541.400	40.4541.500
7,5	390	40.5105.000	40.5105.100	40.5105.200	40.5105.300	40.5105.400	40.5105.500
8,0	480	40.4542.000	40.4542.100	40.4542.200	40.4542.300	40.4542.400	40.4542.500
8,5	480	40.5106.000	40.5106.100	40.5106.200	40.5106.300	40.5106.400	40.5106.500
9,0	480	40.4543.000	40.4543.100	40.4543.200	40.4543.300	40.4543.400	40.4543.500
9,5	480	40.5107.000	40.5107.100	40.5107.200	40.5107.300	40.5107.400	40.5107.500
10,0	480	40.4544.000	40.4544.100	40.4544.200	40.4544.300	40.4544.400	40.4544.500
10,5	480	40.5108.000	40.5108.100	40.5108.200	40.5108.300	40.5108.400	40.5108.500
11,0	480	40.4545.000	40.4545.100	40.4545.200	40.4545.300	40.4545.400	40.4545.500
11,5	480	40.5109.000	40.5109.100	40.5109.200	40.5109.300	40.5109.400	40.5109.500
12,0	480	40.4546.000	40.4546.100	40.4546.200	40.4546.300	40.4546.400	40.4546.500
12,5	480	40.5110.000	40.5110.100	40.5110.200	40.5110.300	40.5110.400	40.5110.500
13,0	480	40.4547.000	40.4547.100	40.4547.200	40.4547.300	40.4547.400	40.4547.500
13,5	480	40.5111.000	40.5111.100	40.5111.200	40.5111.300	40.5111.400	40.5111.500
14,0	480	40.4548.000	40.4548.100	40.4548.200	40.4548.300	40.4548.400	40.4548.500
14,5	480	40.5112.000	40.5112.100	40.5112.200	40.5112.300	40.5112.400	40.5112.500
15,0	480	40.5113.000	40.5113.100	40.5113.200	40.5113.300	40.5113.400	40.5113.500
15,5	480	40.5114.000	40.5114.100	40.5114.200	40.5114.300	40.5114.400	40.5114.500
16,0	480	40.5115.000	40.5115.100	40.5115.200	40.5115.300	40.5115.400	40.5115.500
16,5	480	40.5116.000	40.5116.100	40.5116.200	40.5116.300	40.5116.400	40.5116.500
17,0	480	40.5117.000	40.5117.100	40.5117.200	40.5117.300	40.5117.400	40.5117.500
17,5	480	40.5118.000	40.5118.100	40.5118.200	40.5118.300	40.5118.400	40.5118.500
18,0	480	40.5119.000	40.5119.100	40.5119.200	40.5119.300	40.5119.400	40.5119.500

dostępne typy zamocowań • available connections • доступные типы соединений

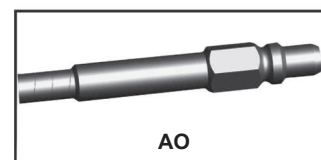
40.xxxx.000



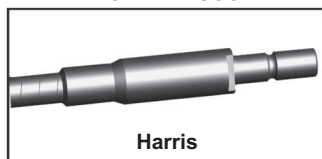
40.xxxx.100



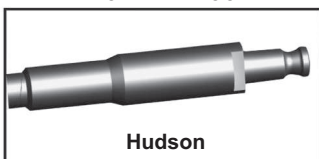
40.xxxx.200



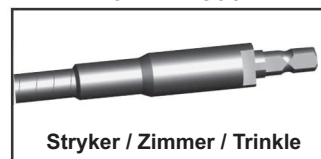
40.xxxx.300

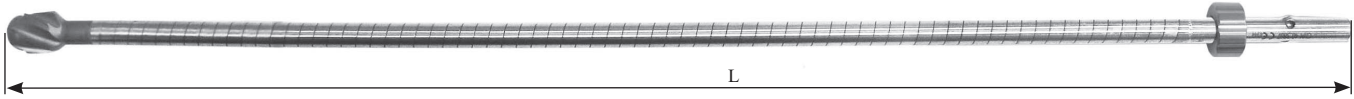


40.xxxx.400

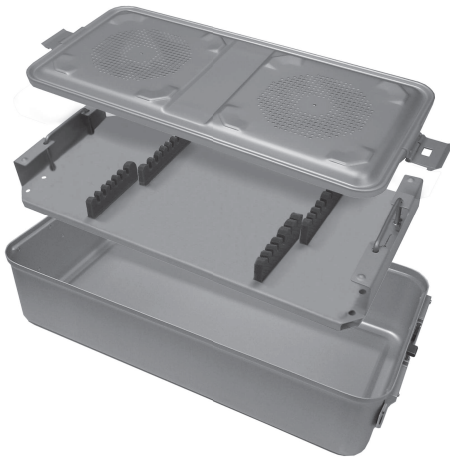


40.xxxx.500





Ø [mm]	L [mm]	DIN z nakrętką, with nut, с гайкой		Ø [mm]	L [mm]	DIN z nakrętką, with nut, с гайкой		Ø [mm]	L [mm]	DIN z nakrętką, with nut с гайкой	
		Nr katalogowy, Catalogue no. № по кат.				Nr katalogowy, Catalogue no. № по кат.				Nr katalogowy, Catalogue no. № по кат.	
6,0	390	40.3850.000		10,5	480	40.3859.000		15,0	480	40.3868.000	
6,5	390	40.3851.000		11,0	480	40.3860.000		15,5	480	40.3869.000	
7,0	390	40.3852.000		11,5	480	40.3861.000		16,0	480	40.3870.000	
7,5	390	40.3853.000		12,0	480	40.3862.000		16,5	480	40.3871.000	
8,0	480	40.3854.000		12,5	480	40.3863.000		17,0	480	40.3872.000	
8,5	480	40.3855.000		13,0	480	40.3864.000		17,5	480	40.3873.000	
9,0	480	40.3856.000		13,5	480	40.3865.000		18,0	480	40.3874.000	
9,5	480	40.3857.000		14,0	480	40.3866.000					
10,0	480	40.3858.000		14,5	480	40.3867.000					



**Statyw na rozwiertaki (komplet z kontenerem)**

Stand for reamers (set with container)  
Подставка для интрамедуллярных свёрел (комплект с контейнером)  
**40.5762.000**



**Pokrętko**  
Hand wheel  
Рукоятка  
**40.3232**

**Wkładka statywu na rozwiertaki (tylko taca wewnętrzna)**

Stand insert for reamers (internal tray only)  
Вкладыш для подставки для интрамедуллярных свёрел (только внутренний поднос)  
**40.5762.100**

**Drut prowadzący**

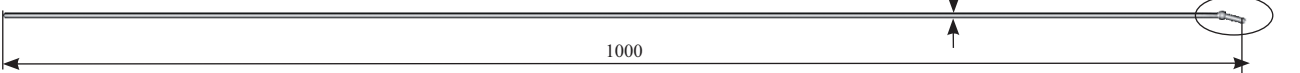
Guide rod  
Спица-направитель



Ø [mm]	L [mm]	D	Nr katalogowy, Catalogue no., № по кат.
1,8	600	4	40.4749.600
2,5	500	5	40.4747.500
3,0	700	5	40.3929.000

**Drut prowadzący 3,0/1000**

Guide rod 3.0/1000  
Спица-направитель 3,0/1000



Ø [mm]	L [mm]	D	Nr katalogowy, Catalogue no., № по кат.
3,0	1000	5	40.3930